

Oracle JDeveloper 11g - AppDb.jws : PrDb.jpr : D:\My Documents\Cursuri\Curs Master Java\App\113-Database\PrDb\src\cuJDBC.java

File Edit View Search Navigate Build Run Source Refactor Versioning Tools Window Help

Application Navigator

AppDb

- Projects
  - AppDb
    - Application Sources
      - cuJDBC.java
    - Resources
      - test.mdb

Recently Opened Files

cuJDBC.java - St... Hierarchy

Imports

- cuJDBC
  - afisare(ResultSet) : void
  - getAccessDBConnection(String) : Co
  - main(String[]) : void
  - accessDBURLPrefix : String
  - accessDBURLSuffix : String
  - filename : String

```

import java.sql.Connection;
import java.sql.DatabaseMetaData;
import java.sql.DriverManager;
import java.sql.PreparedStatement;
import java.sql.ResultSet;
import java.sql.SQLException;
import java.sql.Statement;

public class cuJDBC {
    private static final String accessDBURLPrefix = "jdbc:odbc:Driver={Microsoft Access Driver (*.mdb)};DEQ=";
    private static final String accessDBURLSuffix = ";DriverID=22;READONLY=false";
    //private static final String filename = "C:/Users/Antal Tiberiu/Documents/JDeveloper/mywork/AppDb/PrDb/test.mdb";

    //aceasta cale trebuie "adaptata" la locul in care este baza de date MS Access
    private static final String filename = "D:\\My Documents\\Cursuri\\Curs Master Java\\App\\113-Database\\PrDb\\test.mdb";

    public static Connection getAccessDBConnection(String filename) throws SQLException {
        filename = filename.trim();
        String databaseURL = accessDBURLPrefix + filename + accessDBURLSuffix;
        return DriverManager.getConnection(databaseURL, "", "");
    }

    public static void afisare(ResultSet resultSet) throws SQLException {
        String out="";
        for(int i=1;i<=resultSet.getMetaData().getColumnCount();++i)
            out+=resultSet.getMetaData().getColumnName(i) + " ";
        System.out.println(out);

        while(resultSet.next()) {
            out="";
            for(int i=1;i<=resultSet.getMetaData().getColumnCount();++i)
                out+=resultSet.getString(i) + " ";
            System.out.println(out);
        }
    }
}

```

Running: PrDb.jpr - Log

```

"C:\Program Files\Java\jdk1.6.0\bin\javaw.exe" -client -classpath "D:\My Documents\Cursuri\Curs Master Java\App\113-Database
Database: ACCESS
Version: 2.0

Selectie * instructiuni
ID program instructiune parametri data real
1 program1 linie x1=10,y1=10;x2=20,y2=30 2009-10-01 00:00:00 1234.0
2 program1 arc x1=10,y1=20;r=20 2009-11-01 00:00:00 1234.0
3 program1 grip open 2009-12-01 00:00:00 1234.0
4 program2 linie x1=1;x2=2 2009-12-01 00:00:00 111.0
5 program2 linie x1=1;x2=2 2009-12-01 00:00:00 111.0

```

Messages Running: PrDb.jpr

Start Total Comman... WordPerfect X... Oracle JDevel... Lisa Ekdahl - [Si... 6:21 PM

## AppDb > PrDb> cuJDBC

```
import java.sql.Connection;
import java.sql.DatabaseMetaData;
import java.sql.DriverManager;
import java.sql.PreparedStatement;
import java.sql.ResultSet;
import java.sql.SQLException;
import java.sql.Statement;

public class cuJDBC {
    private static final String accessDBURLPrefix =
"jdbc:odbc:Driver={Microsoft Access Driver (*.mdb)};DBQ=";
    private static final String accessDBURLSuffix =
";DriverID=22;READONLY=false}";
    //private static final String filename = "C:/Users/Antal
Tiberiu/Documents/JDeveloper/mywork/AppDb/PrDb/test.mdb";

    //aceasta cale trebuie "adaptata" la locul in care este baza de date MS
Access
    private static final String filename = "D:\\My Documents\\Cursuri\\Curs
Master Java\\App\\113-Database\\PrDb\\test.mdb";

    public static Connection getAccessDBConnection(String filename) throws
SQLException {
        filename = filename.trim();
        String databaseURL = accessDBURLPrefix + filename +
accessDBURLSuffix;
        return DriverManager.getConnection(databaseURL, "", "");
    }

    public static void afisare(ResultSet resultSet) throws SQLException {
        String out="";
        for(int i=1;i<=resultSet.getMetaData().getColumnCount();++i)
            out+=resultSet.getMetaData().getColumnName(i) + " ";

```

```
System.out.println(out);

while(resultSet.next()) {
    out="";
    for(int i=1;i<=resultSet.getMetaData().getColumnCount();++i)
        out+=resultSet.getString(i) + " ";
    System.out.println(out);
}
}

public static void main(String[] args) {
    try {
        Class.forName("sun.jdbc.odbc.JdbcOdbcDriver");

        Connection connection =getAccessDBConnection(filename);

        DatabaseMetaData dbMetaData = connection.getMetaData();
        String productName = dbMetaData.getDatabaseProductName();
        System.out.println("Database: " + productName);
        String productVersion = dbMetaData.getDatabaseProductVersion();
        System.out.println("Version: " + productVersion);

        Statement statement = connection.createStatement();
        System.out.println("\nSelectie * instructiuni");
        String query = "SELECT * FROM Table1";
        ResultSet resultSet = statement.executeQuery(query);
        afisare(resultSet);

        java.sql.Date dataazi =new java.sql.Date(new
java.util.Date().getTime());
        String ins ="INSERT INTO Table1" +
"([program],[instructiune],[parametri],[data],[real])
VALUES('program2','linie','x1=1;x2=2',#'"+ dataazi+"#, 1211)";

```

```
System.out.println(ins);
statement.executeUpdate(ins);
```

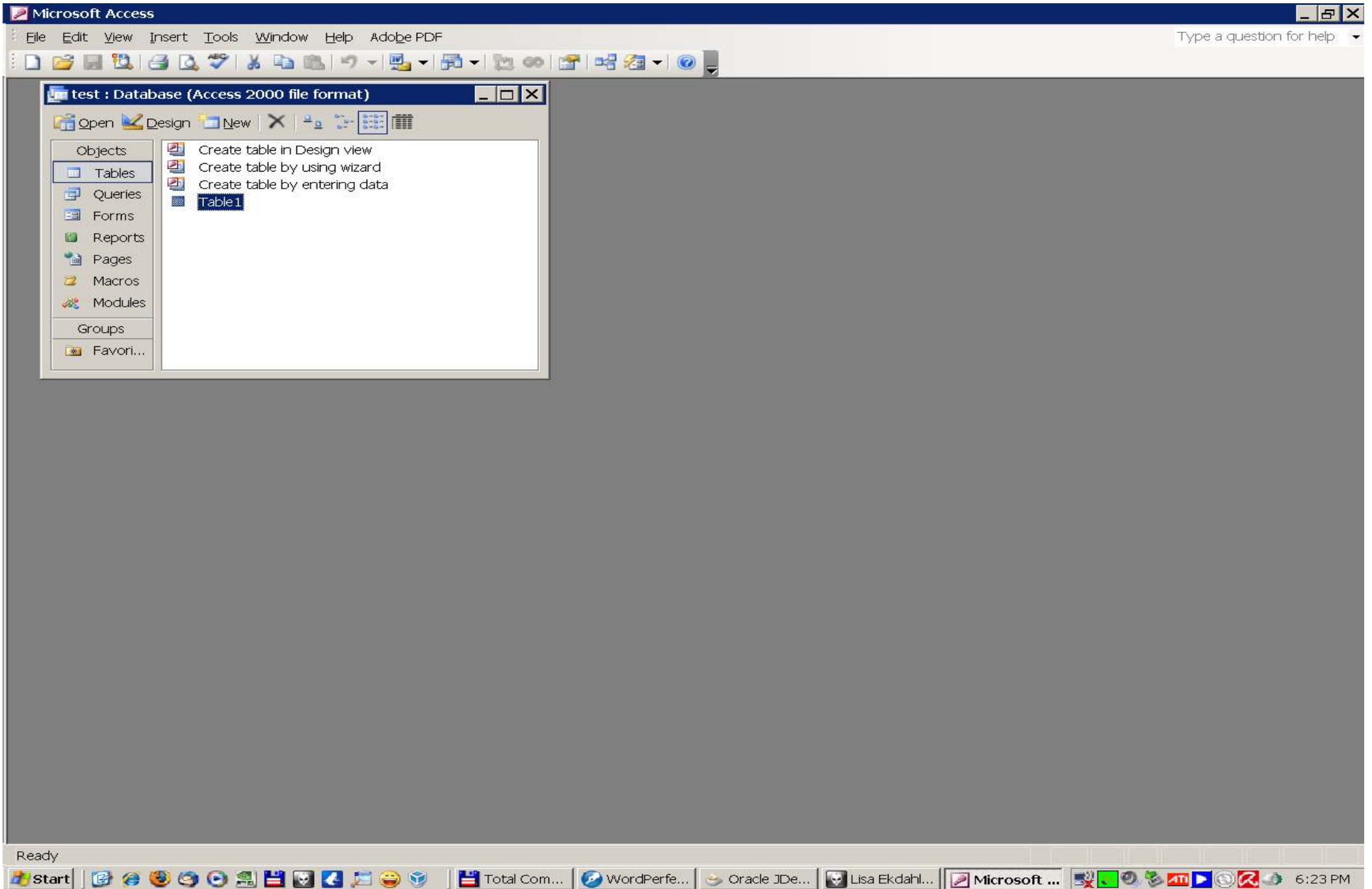
```
System.out.println("\nSelectie numai instructiuni program2");
query = "SELECT * FROM Table1 WHERE [program]='program2'";
resultSet = statement.executeQuery(query);
afisare(resultSet);
```

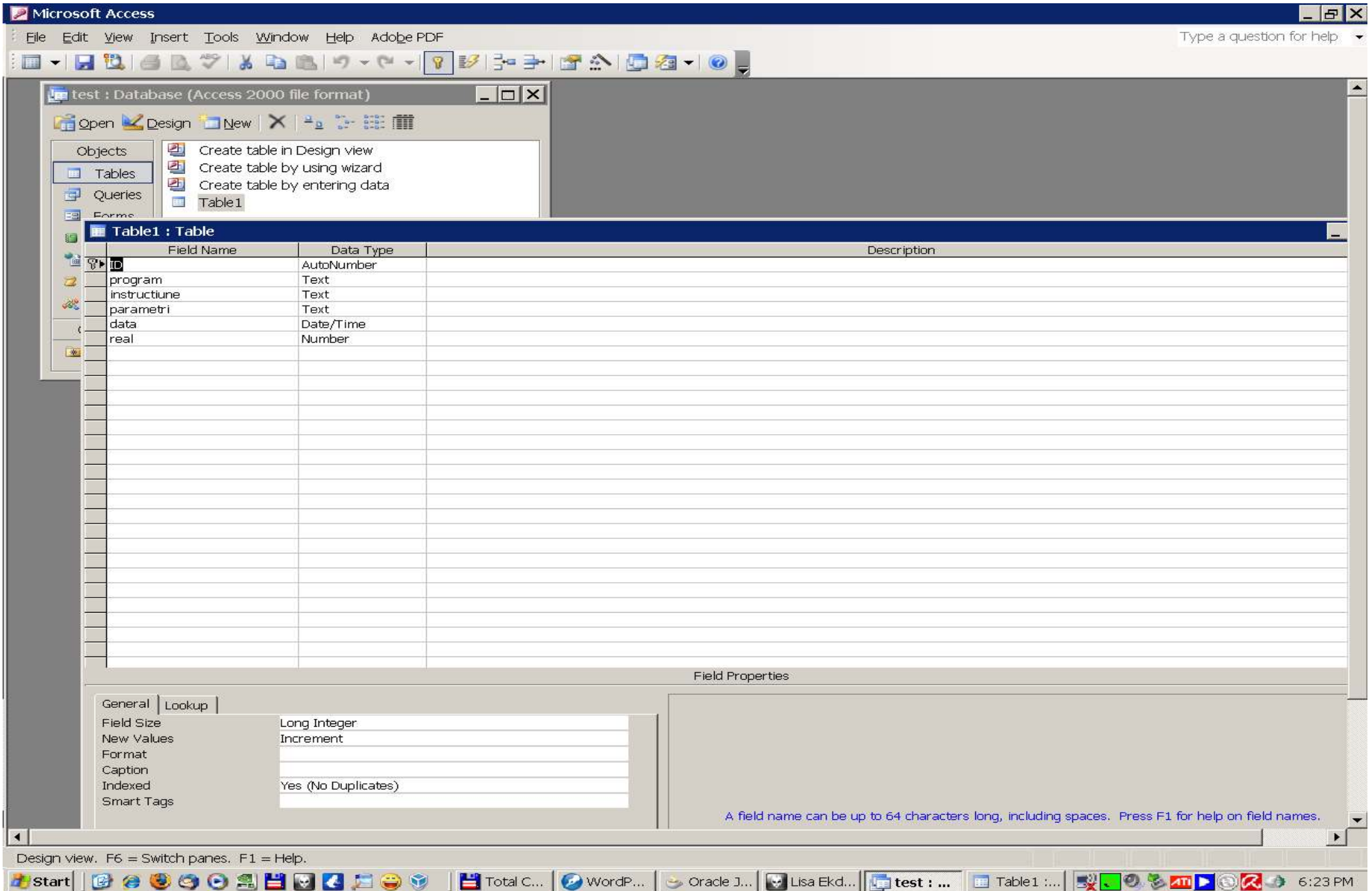
```
System.out.println("\nSterge linii din Table1");
query = "DELETE * FROM Table1 WHERE [real]=1211";
int rowsAffected= statement.executeUpdate(query);
System.out.println(rowsAffected + " rows effected");
```

```
System.out.println("\nActualizare linii din Table1");
query = "UPDATE Table1 SET [real] = 1234 WHERE [program] =
'program1'";
rowsAffected = statement.executeUpdate(query);
System.out.println(rowsAffected + " rows effected");
```

```
statement.close();
connection.close();
```

```
} catch(ClassNotFoundException e) {
    System.err.println("Error loading driver: " + e);
} catch (SQLException e) {
    System.err.println("SQL exception: " + e);
}
}
}
```





Microsoft Access

File Edit View Insert Format Records Tools Window Help Adobe PDF

Type a question for help

test : Database (Access 2000 file format)

Open Design New

Objects

- Tables
- Queries
- Forms

Create table in Design view  
 Create table by using wizard  
 Create table by entering data  
 Table1

Table1 : Table

ID	program	instructiune	parametri	data	real
1	program1	linie	x1=10,y1=10;x2=20,y2=30	10/1/2009	1234
2	program1	arc	x1=10,y1=20;r=20	11/1/2009	1234
3	program1	grip	open	12/1/2009	1234
4	program2	linie	x1=1;x2=2	12/1/2009	111
5	program2	linie	x1=1;x2=2	12/1/2009	111
6	program2	linie	x1=1;x2=2	12/1/2009	111
7	program2	linie	x1=1;x2=2	12/1/2009	111
8	program2	linie	x1=1;x2=2	12/1/2009	111
9	program2	linie	x1=1;x2=2	12/1/2009	111
10	program2	linie	x1=1;x2=2	12/1/2009	111
11	program2	linie	x1=1;x2=2	12/1/2009	111
*	(AutoNumber)				0

Datasheet View

Start Total C... WordP... Oracle J... Lisa Ekd... test : D... Table1... 6:24 PM

